



Society for Clinical Data Management
DATA DRIVEN

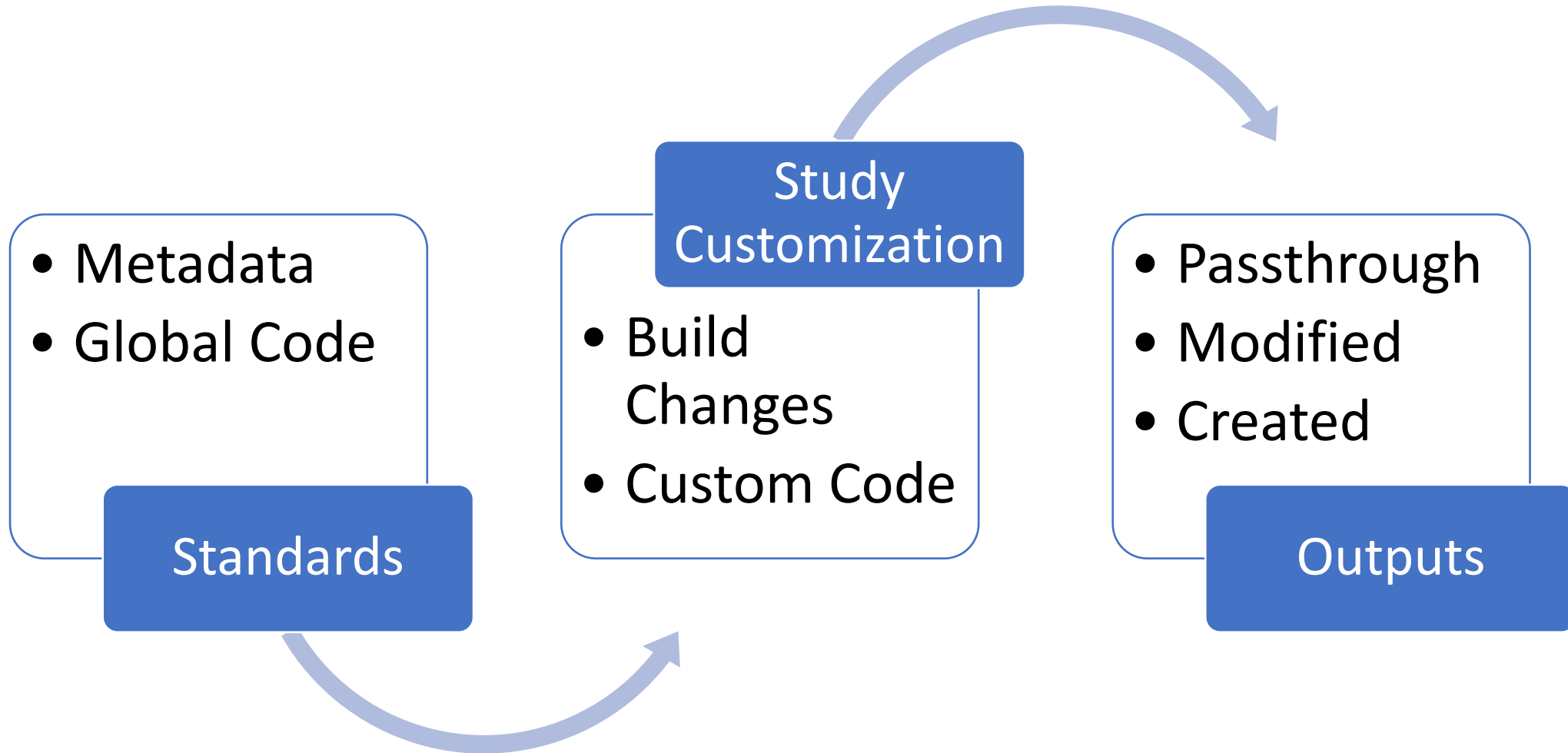
Theme:
Capabilities | Collaboration |
Change on the way to Clinical Data Science

SCDM **Live**

India conference

2nd - 3rd December 2022
Radisson Blu Hotel, Bengaluru

Standardization to Automation



Possibilities

- MDR (Metadata Repository) – holds standards including:
 - EDC builds, SDTM, ADaM, and TLF mapping metadata
 - Custom study modifications
- Automatic annotated CRF
- Patient Narratives

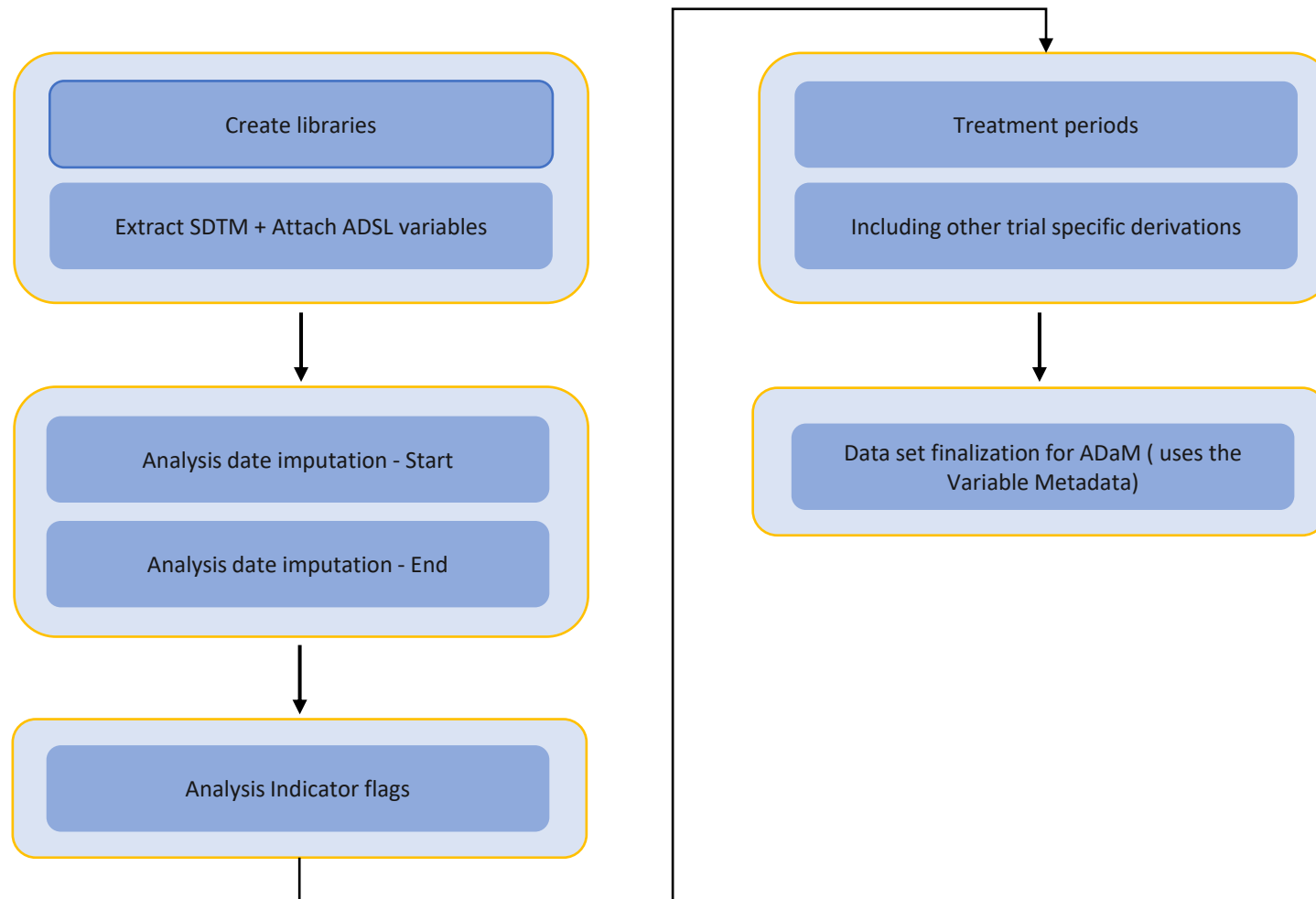


Possibilities



- MMAPs (Modular Mapping Assisted Programs)
 - SDTM Mapping generation
 - ADaM Mapping generation

- MMAPs (Modular Mapping Assisted Programs) – Overview



TLF Programming

- Modular automation – Building blocks towards displays.

```
%include config.sas

%let percent =()

%gmBigN() -> dataset|
%gmCountCategorical() -> dataset
%gmGetPercent() -> dataset
```



Modular program for big N

Footnotes extracted from metadata

		BLINDED		Protocol
		CONFIDENTIAL		Page 1 of 2
		Table 1.1		
		Disposition		
		(All Randomized Subjects)		
		Arm 1 (N=50)	Arm 2 (N=52)	Total (N=102)
		n (%)	n (%)	n (%)
Treated		50 (100.0)	50 (96.2)	100 (98.0)
Day 1 dose		50 (100.0)	50 (96.2)	100 (98.0)
Day 8 dose		28 (56.0)	27 (51.9)	55 (53.9)
Early Study Treatment Withdrawal		8 (16.0)	5 (9.6)	13 (12.7)
Death		7 (14.0)	4 (7.7)	11 (10.8)
Other		1 (2.0)	0	1 (1.0)
Withdrawal by Subject		0	1 (1.9)	1 (1.0)
Early Study Withdrawal		23 (46.0)	18 (34.6)	41 (40.2)
Death		21 (42.0)	14 (26.9)	35 (34.3)
Lost To Follow-Up		2 (4.0)	3 (5.8)	5 (4.9)
Withdrawal by Subject		0	1 (1.9)	1 (1.0)
Included in ITT Population		50 (100.0)	50 (96.2)	100 (98.0)
Included in Safety Population		50 (100.0)	50 (96.2)	100 (98.0)

Data represented are from the clinical study data observed through the data cut date. Data cleaning activities have been completed for these data.
 The Intent-to-Treat (ITT) analysis set includes all randomized subjects who received any amount of study medication (drug or placebo) and is analyzed by treatment arm assigned at randomization.
 The Safety analysis set includes all randomized subjects who received any amount of study medication (drug or placebo) and is analyzed by treatment arm actually received.
 /projects/study/stats/primary/prog/tables/t_adsl_disp.sas/date/time

Titles extracted from metadata

Modular program for table counts

Modular program for count formats

Risks

